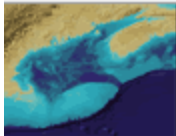


Gulf of Maine Ocean Data Partnership

Metadata Editorial Committee Progress Report

`Putting the Peas In Our Portal, Partners That Is`

Lou Van Guelpen, Sylvia Most, Melanie Meaux, and Bob Branton



A Global Change Master Directory Portal for the Gulf of Maine Ocean Data Partnership (GoMODP)

[HOME](#)

[DATA SEARCH](#)

[DATA SERVICES](#)

[AUTHORING TOOLS](#)

[PARTNERS](#)

[ABOUT US](#)

[GCMD HOME](#)



- ▣ [About Portals](#)
- ▣ [GCMD Portal Listings](#)
- ▣ [Add to the GoMODP portal](#)
- ▣ [GoMODP Data Sets](#)
- ▣ [Search for any Gulf of Maine Data](#)
- ▣ [GoMODP Website](#)

This portal provides access to information for datasets and services collected and maintained by the [GoMODP](#).

Find Data Sets by Topic:



[Science Keyword](#)



[Instrument](#)



[Data Center](#)



[Platform](#)



[Map/Date Search](#)
OR
[Location Name Search](#)



[Project](#)



[Search for any Gulf of Maine Data](#)

Clicking the link above will transfer you out of the portal you are viewing.



[NASA Privacy Policy and Important Notices](#)

Responsible NASA Official: [Lola Olsen](#)

Webmaster: [Monica Holland](#) · [Contact GCMD User Support](#) for assistance

A Global Change Master Directory Portal for the
Gulf of Maine Ocean Data Partnership (GoMODP)

HOME DATA SEARCH DATA SERVICES AUTHORIZING TOOLS PARTNERS ABOUT US GCMD HOME

- ▣ About Portals
- ▣ GCMD Portal Listings
- ▣ Add to the GoMODP portal
- ▣ GoMODP Data Sets
- ▣ GOMMP Portal
- ▣ GoMODP Website

Find Data Sets at these Nodes:



[Bedford Institute of Oceanography](#)



[NOAA - Coastal Services Center](#)



[Centre for Marine Biodiversity](#)



[NOAA - Northeast Fisheries Science Center](#)



[Coastal Ocean Observing and Analysis](#)



NOAA - National Environmental Satellite, Data and Information Service, National Oceanographic Data Center



[US Environmental Protection Agency](#)



St. Andrews Biological Station



[Gulf of Maine Area Program of the Census of Marine Life](#)



[Stellwagen Bank National Marine Sanctuary](#)



[Gulf of Maine Ocean Observing System](#)



[Tufts University School of Veterinary Medicine](#)



Gulf of Maine Council on the Marine Environment

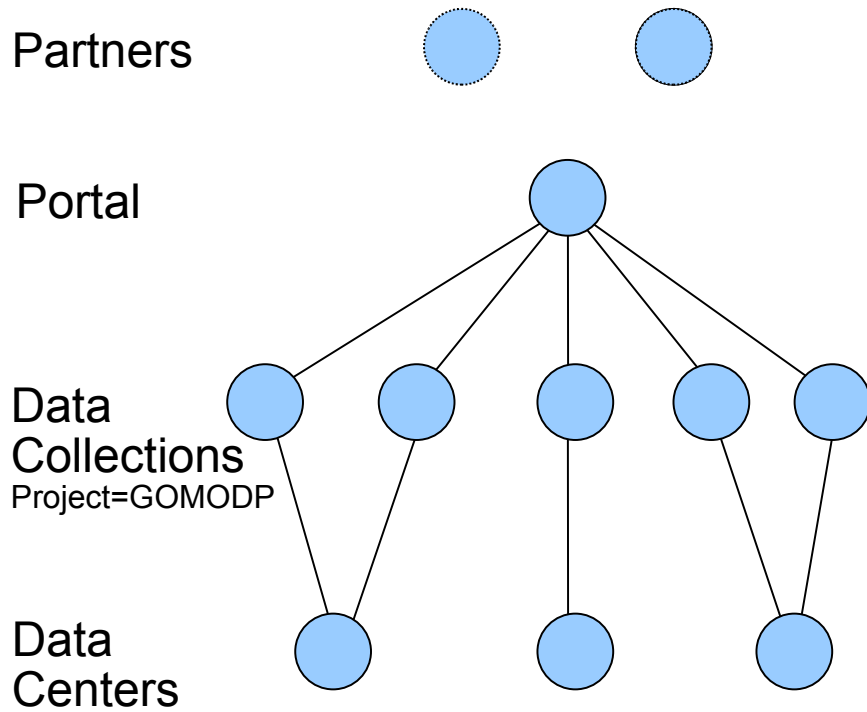


University of Connecticut, Underwater Research Center

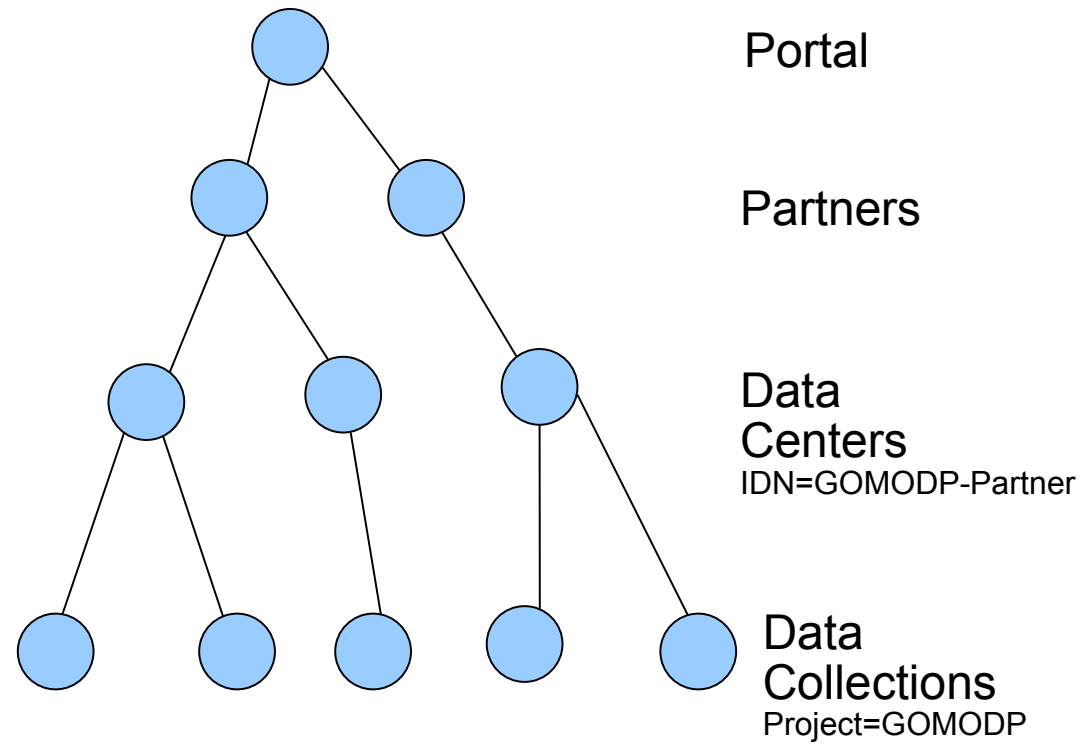
Melanie however wants Lou and I to do some testing ...

What it Means As XML

Before



After



All without having to re-enter data

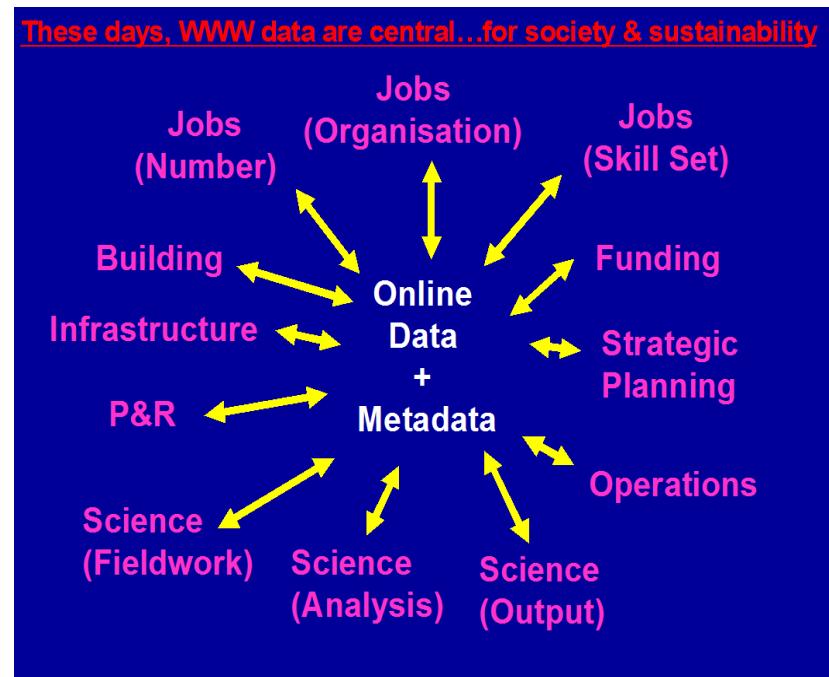
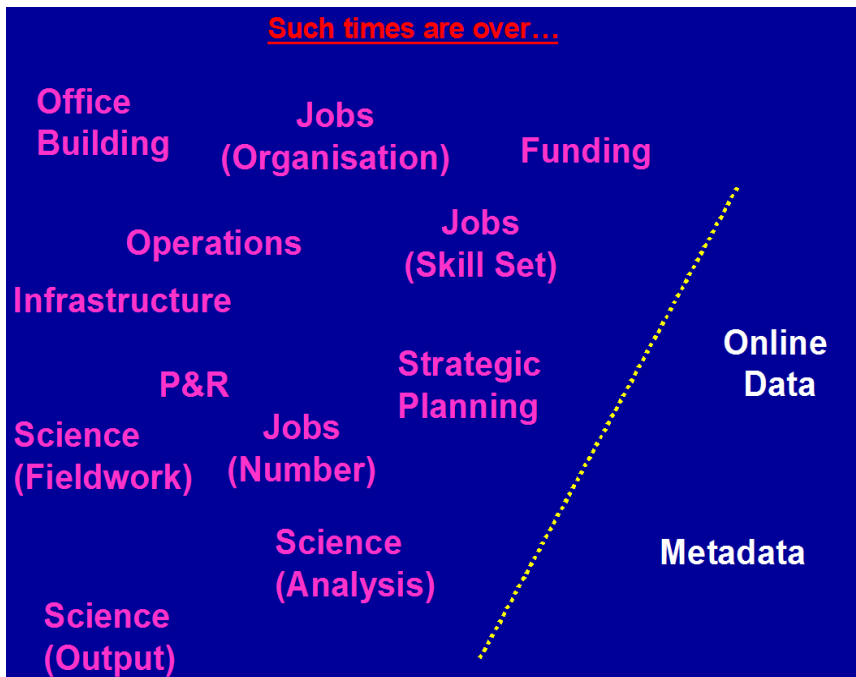
What it Means to GoMODP

- Identify and rank data collections in terms of specific usage cases such as water quality monitoring
- MEC can now ask GoMODP Partners to help with the editorial process
 - Systematically review completeness of the metadata records
 - Improve application of keywords
- Treat metadata as data and deal with the GoMODP collection of collections as a single cohesive entity

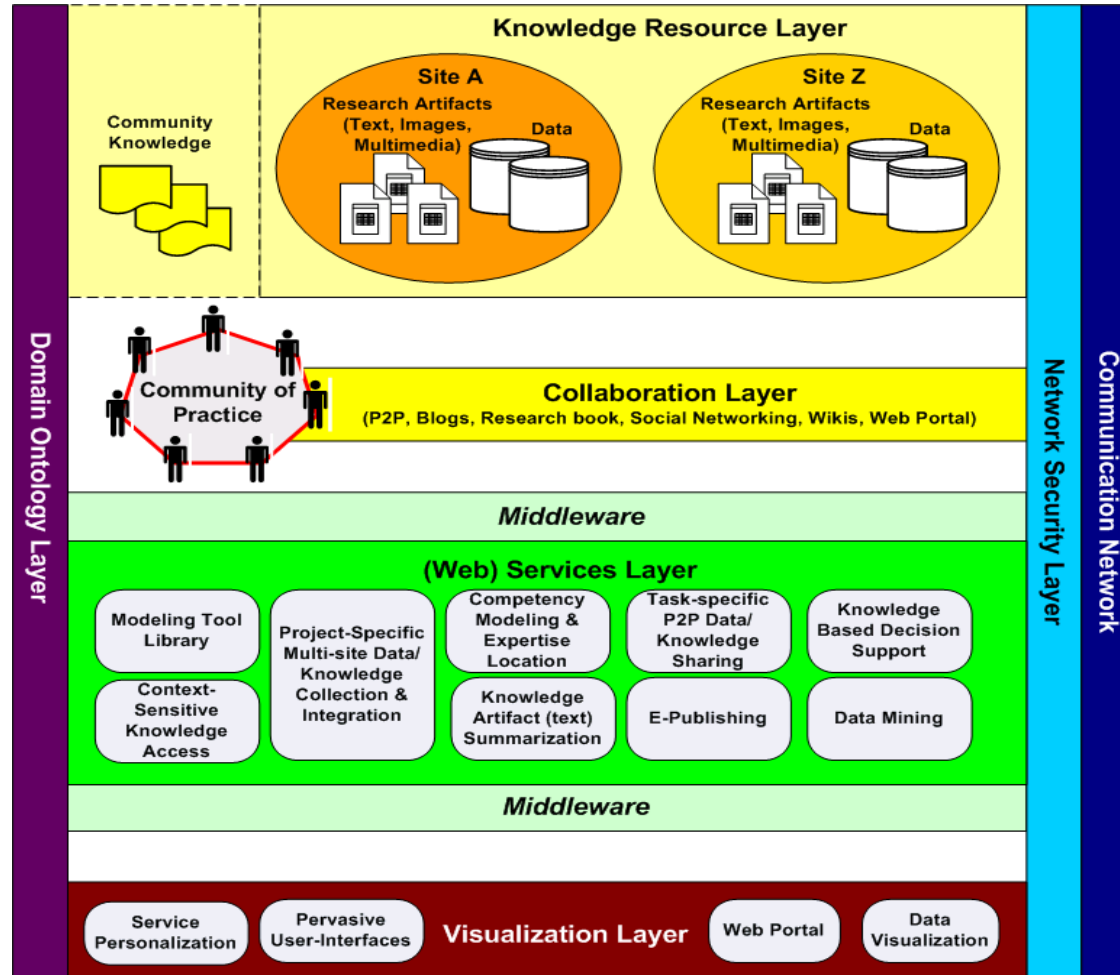
Getting it right

Past ...

Future ...



Building a Ocean Knowledge Management Framework



From Dalhousie U's
Canarie submission

Discovery vs. Content Metadata

Although assembly of discovery metadata does greatly improve usability of data, it must not be seen as a substitute for preparation of detailed content metadata.

